

STANDARD DEPARTURE CHART
INSTRUMENT (SID) - ICAO

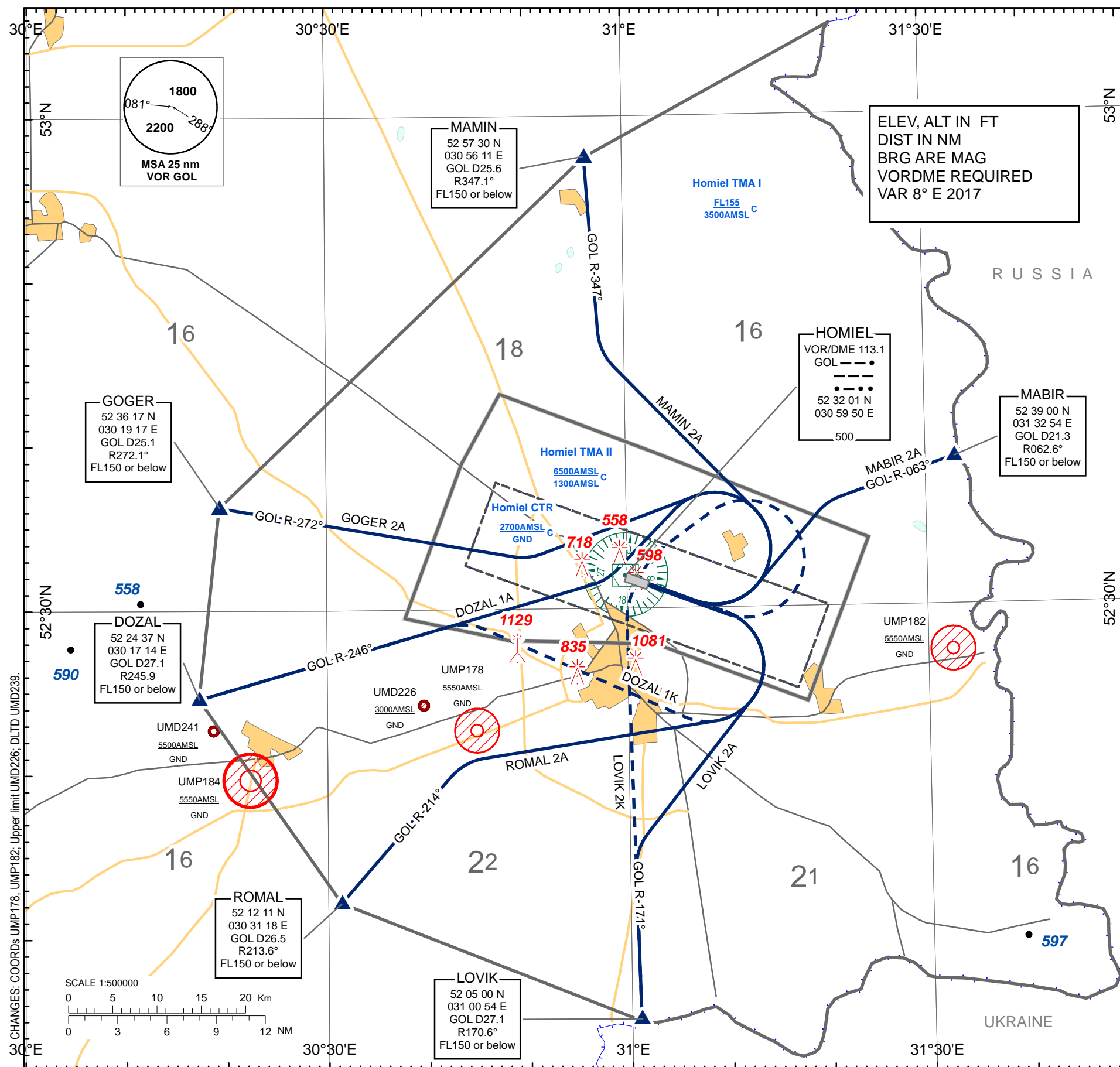
TRANSITION ALTITUDE
6000

Alt set: hPa (mm on req)
- QNH (QFE on req)

APP 126.100
TWR 118.100
MET 119.550 (EN)
124.475 (RUS)

HOMIEL
RWY10

GOGER 2A, DOZAL 1A, DOZAL 1K, LOVIK 2A
LOVIK 2K, MABIR 2A, MAMIN 2A, ROMAL 2A



STANDARD INSTRUMENT DEPARTURE (SID) ROUTES HOMIEL RWY 10	
SID NAME	ROUTE
GOGER 2A	GOGER TWO ALFA Climb straight ahead to 1100 (639) or above, turn LEFT 242° track to intercept GOL VOR R-272° and proceed to GOGER.
DOZAL 1A	DOZAL ONE ALFA Climb straight ahead to 1100 (639) or above, turn LEFT 216° track to intercept GOL VOR R-246° and proceed to DOZAL.
DOZAL 1K	DOZAL ONE KILO Climb straight ahead to 1500 (1039) or above, GOL DME D7 not less, turn RIGHT 286° track to intercept GOL VOR R-246° and proceed to DOZAL.
LOVIK 2A	LOVIK TWO ALFA Climb straight ahead to 1500 (1039) or above, turn RIGHT 211° track to intercept GOL VOR R-171° and proceed to LOVIK.
LOVIK 2K	LOVIK TWO KILO Climb straight ahead to 1500 (1039) or above, GOL DME D7 not less, turn LEFT to GOL VOR (pass GOL VOR at 3000 or above), to intercept GOL VOR R-171° and proceed to LOVIK.
MABIR 2A	MABIR TWO ALFA Climb straight ahead to 1100 (639) or above, turn LEFT 033° track to intercept GOL VOR R-063° and proceed to MABIR.
MAMIN 2A	MAMIN TWO ALFA Climb straight ahead to 1100 (639) or above, turn LEFT 307° track to intercept GOL VOR R-347° and proceed to MAMIN.
ROMAL 2A	ROMAL TWO ALFA Climb straight ahead to 1500 (1039) or above, turn RIGHT 254° track to intercept GOL VOR R-214° and proceed to ROMAL.

THIS PAGE INTENTIONALLY LEFT BLANK